

JCT1240E

JieJie Microelectronics Co., Ltd.

JCT1240E

onics Co., Ltd.

ORDERING INFORM

JieJie Microelectronics C	-/ Blank:Tube -TR:Tape & Reel
	E:TO-263
	DA

MARKING

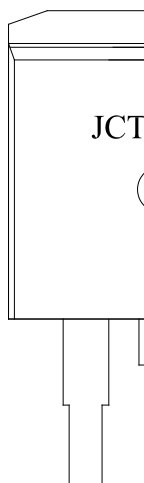


FIG.7: Relative variations of gate trigger current, holding current and latching current versus junction temperature

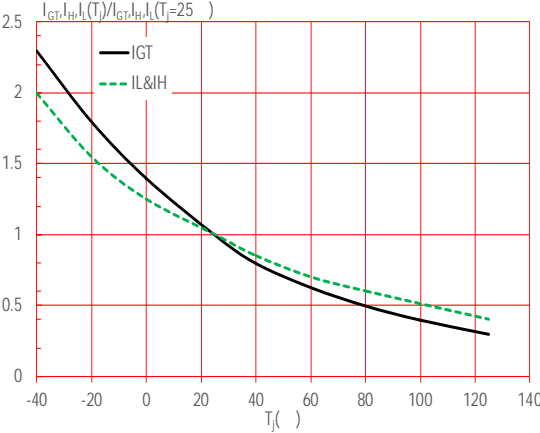
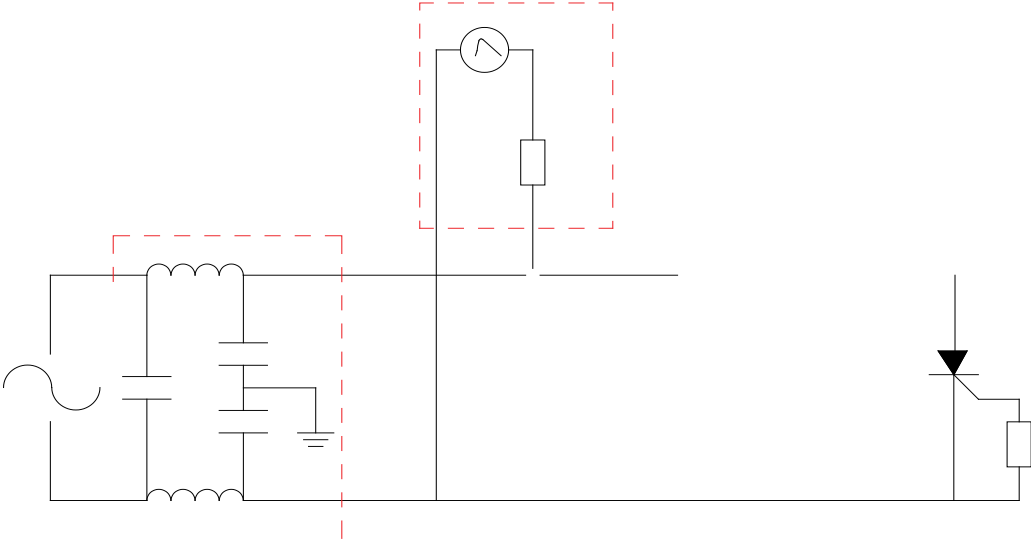
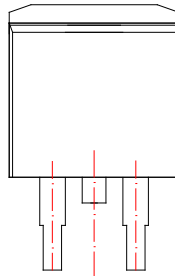
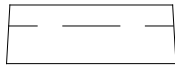


FIG.8 Test circuit for inductive and resistive loads to IEC-61000-4-5 standards.



PACKAGE MECHANICAL DATA



Ref.	Dimensions					
	Millimeters			Inches		
	Min.	Typ.	Max.	Min.	Typ.	Max.
A	9.90		10.20	0.390		0.402
B	14.70		15.80	0.579		0.622
C	9.40		9.60	0.370		0.378
D	2.40			0.094		
E	1.20		1.50	0.047		0.059
F	0.75		0.85	0.029		0.033

DELIVERY MODE



