

JX040C 4A Sensitive SCR

Rev.A.1.1

**DESCRIPTION:**

The JX040C SCR provides high dV/dt rate with strong resistance to electromagnetic interface. It is especially recommended for use on residual current circuit breaker, straight hair, igniter etc. Package TO-220C is RoHS compliant.

**MAIN FEATURES**

Symbol	Value	Unit
$I_{T(RMS)}$	4	A
$V_{DRM} / V_{RRM}$	600	V
$I_{GT}$	"200	A

**ABSOLUTE MAXIMUM RATINGS**

Parameter	Symbol	Value	Unit
Storage junction temperature range	$T_{stg}$	-40-150	
Operating junction temperature range	$T_j$	-40-125 <sup>7</sup>	
Repetitive peak off-state voltage ( $T_j=25^\circ\text{C}$ )	$V_{DRM}$	600	V
Repetitive peak reverse voltage ( $T_j=25^\circ\text{C}$ )	$V_{RRM}$	600	V
Average on-state current ( $T_c 0-110^\circ\text{C}$ )	$I_{T(AV)}$	2.5	A
RMS on-state current ( $T_c 0-110^\circ\text{C}$ )	$I_{T(M8 3S.5)}$		

Peak gate power	$P_{GM}$	5	W
Peak pulse voltage ( $T_j=25$ ; non-repetitive,off-state;FIG.7)	$V_{pp}$	0.5	kV



FIG.1: Maximum power dissipation versus  
RMS on-state current

FIG.2: RMS on-state current versus case  
temperature

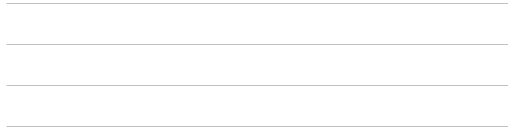
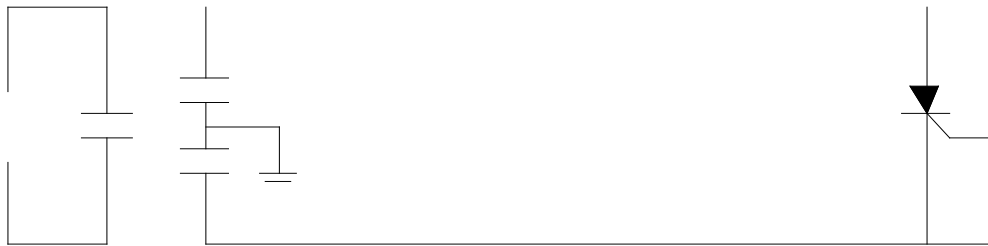


FIG.7 ÖTest circuit for inductive and resistive loads to IEC-61000-4-5 standards.



## ORDERING INFORMATION

Order code	Voltage $V_{DRM}/V_{RRM}$ (V)	IGT( $\mu$ A)	Package	Base qty. (pcs)	Delivery mode
JX040C	600	200	TO-220C	50	Tube

## Document Revision History

Date	Revision	Changes
Apr.12, 2023	A.1.0	Last update
Oct.15, 2025	A.1.1	Revise PACKAGE MECHANICAL DATA

PACKAGE MECHANICAL DATA

JX040C

Jie Jie Microelectronics Co.