

**JIEJIE MICROELECTRONICS CO., LTD.**

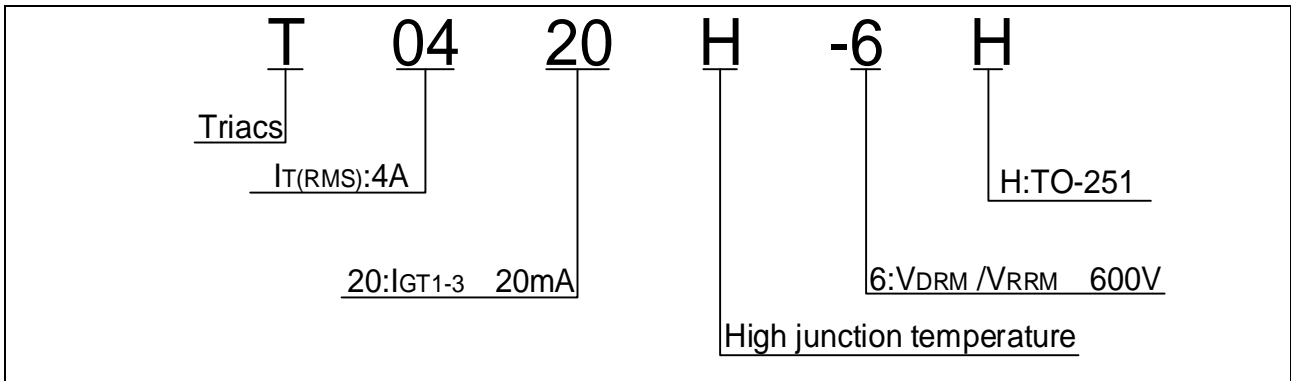
# T0420H-6H

Peak pulse voltage ( $T_j=25$ ; non-repetitive, off-state; FIG.7)	$V_{pp}$	4	kV
--	----------	---	----

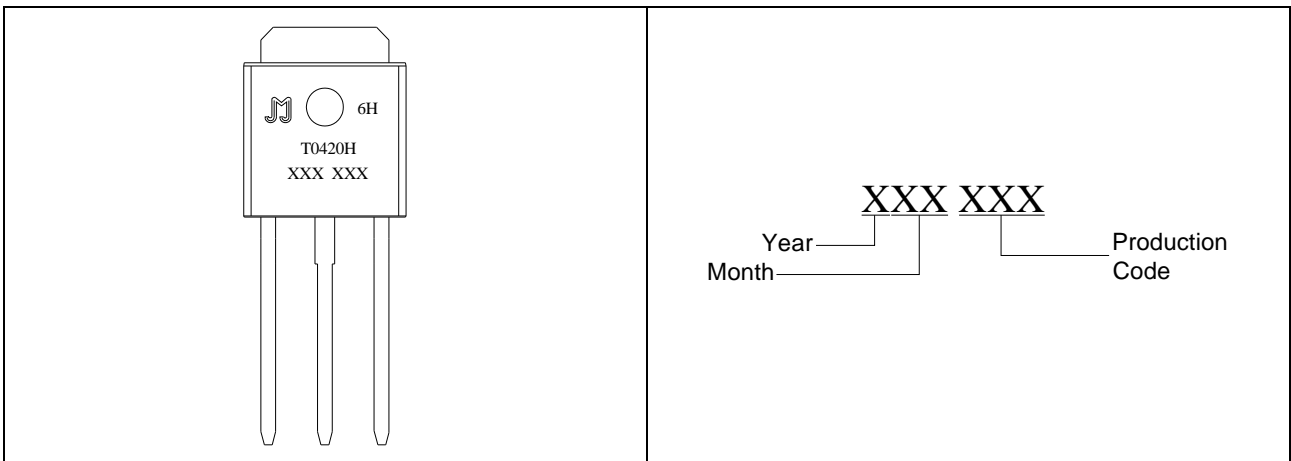
## ELECTRICAL CHARACTERISTICS ( $T_j=25$ unless otherwise specified)

Symbol	Test Condition	Quadrant	Value	Unit
$I_{GT}$	$V_D=12V$ $R_L=33$	- -	20	
$V_{GT}$		- -	MAX.	
$V_{GD}$	$V_D=V_{DRM}$ $T_j=150$ $R_L=3.3k$	- -	MIN.	V
$I_L$	$I_G=1.2I_{GT}$	-	MAX.	30 mA

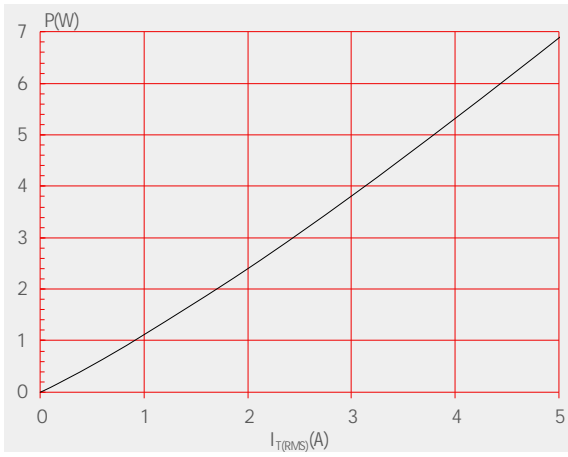
ORDERING INFORMATION



MARKING



**FIG.1:** Maximum power dissipation versus RMS on-state current



**FIG.2:** RMS on-state current versus case temperature

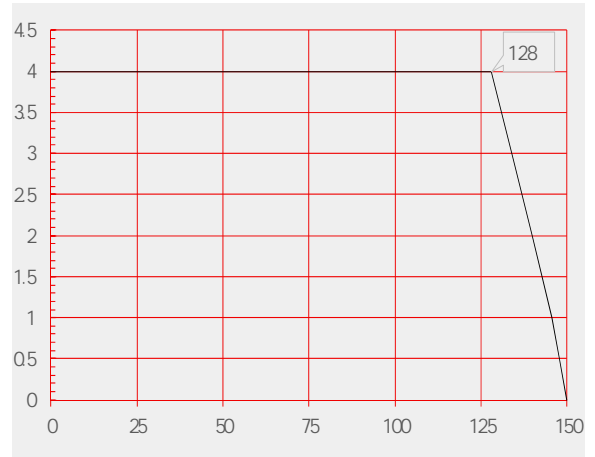
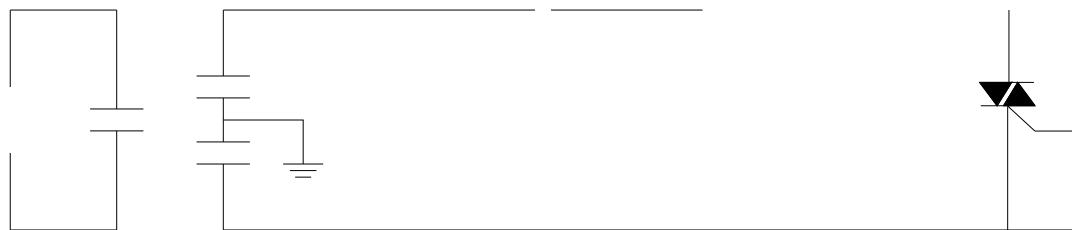
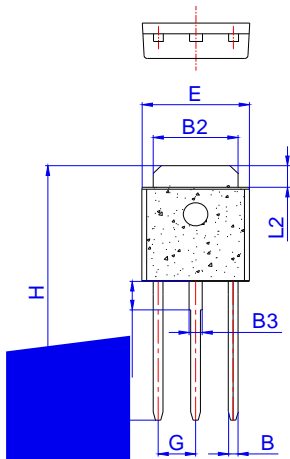


FIG.7 Test circuit for inductive and resistive loads to IEC-61000-4-5 standards





PACKAGE MECHANICAL DATA



Ref.	Dimensions					
	Millimeters			Inches		
	Min.	Typ.	Max.	Min.	Typ.	Max.
A	2.20					
A2	1.00					
B	0					
B2	3					
B3						
G						
L1						

Information furnished in this document is believed to be accurate and reliable. However, Jiangsu JieJie Microelectronics Co., Ltd. assumes no responsibility for the consequences of use without consideration for such information nor use beyond it. Information mentioned in this document is subject to change without notice, apart from that when an agreement is signed, Jiangsu JieJie complies with the agreement.

Products and information provided in this document have no infringement of patents.

pl a s. © Jiangsu JieJie assumes no responsibility for any infringement of patents.  $\hat{A}$  f f