



T0650H-8E 6A TRIAC

Rev.A.1.1

The T0650H-8E triac is suitable for general purpose AC switching. It can be used as an ON/OFF function in applications such as heating regulation, induction motor starting circuits, for phase control operation in light dimmers, motor speed controllers. Compared to traditional t

22 (t)TJ 0.009 T02 Tw 0.27 0 Td [(t)2 (r)7 (i)2 (ac)4 (i)16 (s)4 (s)4 (-0.0022c -0.004 p 0.004vc 0 TJ 0 Tde(

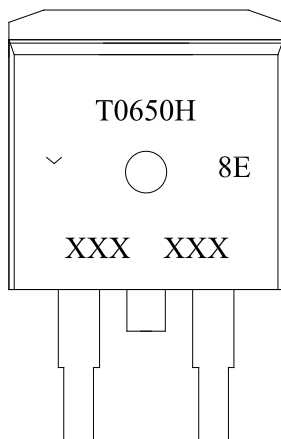
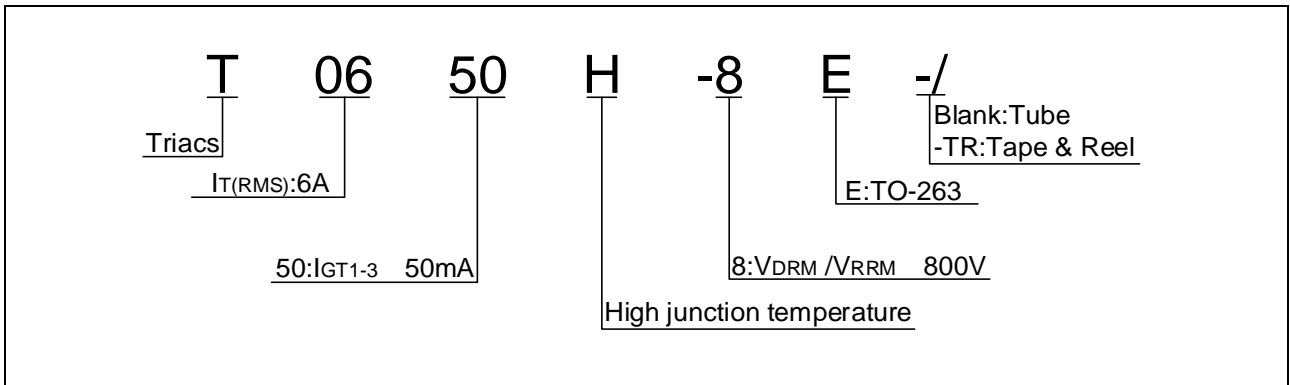


FIG.1: Maximum power dissipation versus RMS on-state current

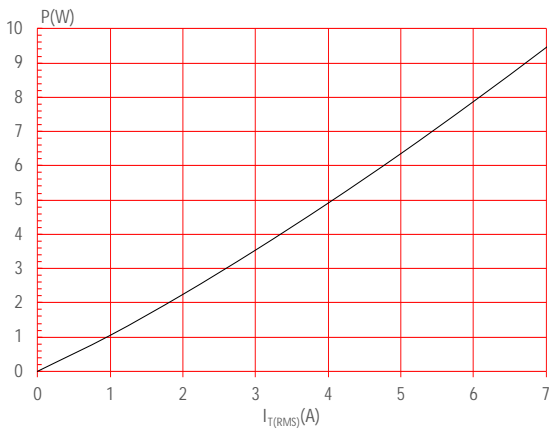


FIG.2: RMS on-state current versus case temperature

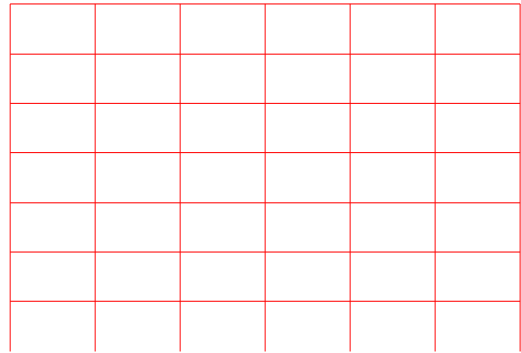
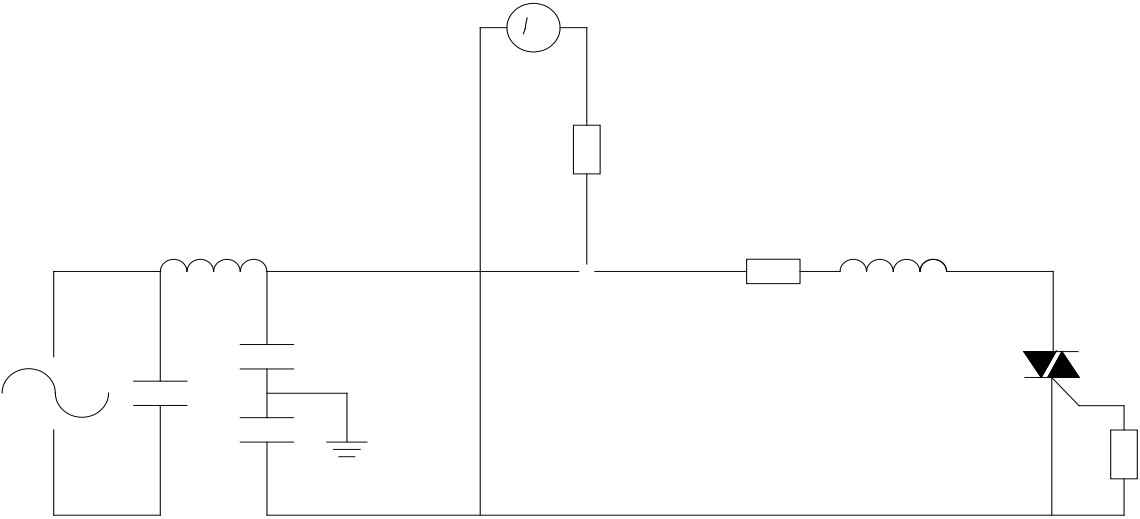


FIG.7: Relative variations of gate trigger current, holding current and latching current versus junction temperature



FIG.8 Test circuit for inductive and resistive loads to IEC-61000-4-5 standards





Information furnished in this document is believed to be accurate and reliable. However,