



T1210H-6C 12A TRIAC

Rev.A.1.1

DESCRIPTION:

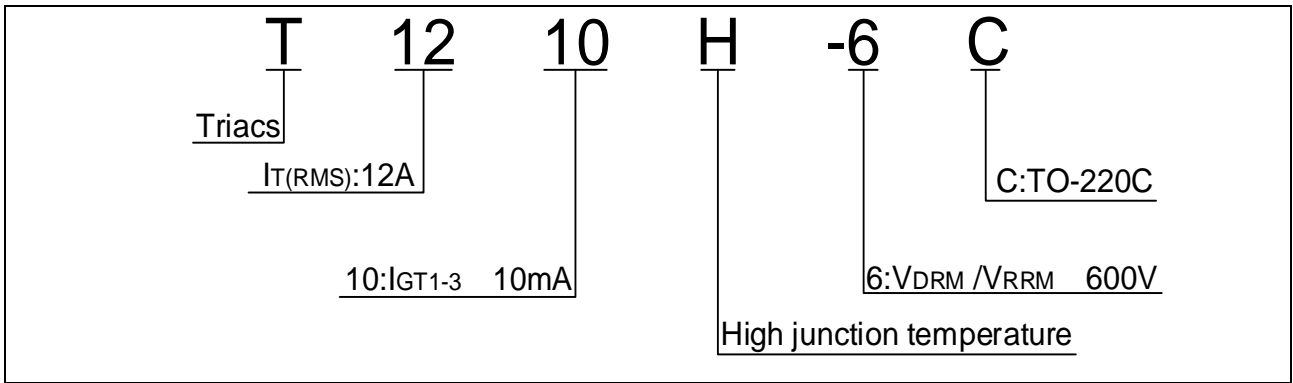
The T1210H-6C triac is suitable for general purpose AC switching. It can be used as an ON/OFF function in applications such as heating regulation, induction motor starting circuits, for phase control operation in light dimmers, motor speed controllers. Compared to traditional triacs, T1210H-6C provides a very high switching capability up to junction temperatures of 150°C. It can be driven directly through the MCU I/O port. From T2 terminals to external heatsink. Package TO-220C is RoHS compliant.

MAIN FEATURES

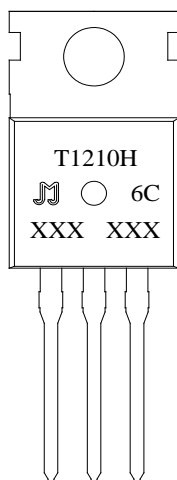
ABSOLUTE MAXIMUM RATINGS (Tc=25°C) (Eam) 0 Tet2 ( m)73 0 Td (t)Tj -0.89/P <</MCID



ORDERING INFORMATION



MARKING



XXX XXX  
Year  
Month

Production  
Code

FIG.1: Maximum power dissipation versus RMS on-state current

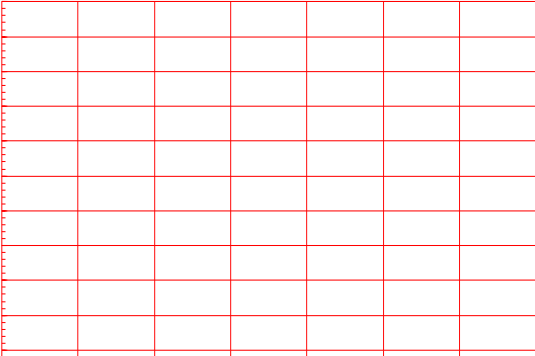
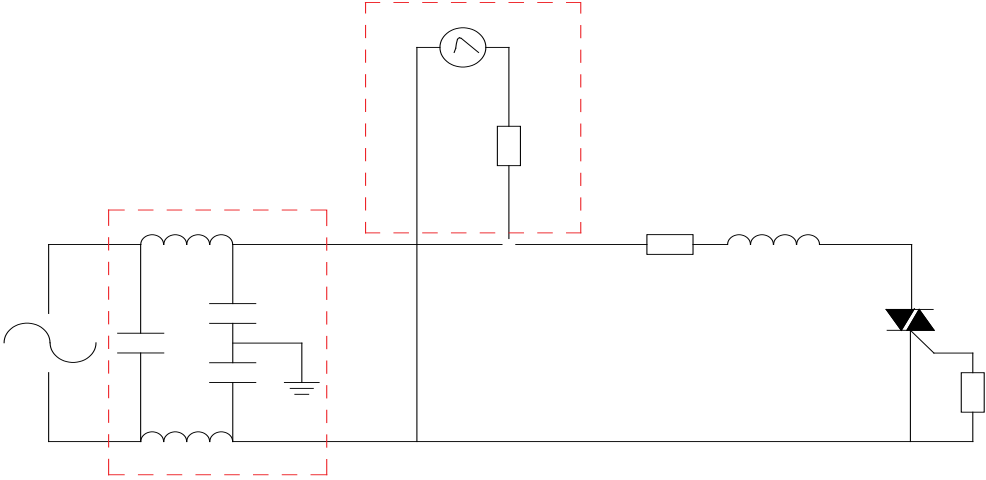


FIG.2: RMS on-state current versus case temperature

FIG.7 Test circuit for inductive and resistive loads to IEC-61000-4-5 standards



ORDERING INFORMATION

Order code	Voltage $V_{DRM}/V_{RRM}$ (V)	IGT(mA)	Package	Base qty. (pcs)	
------------	----------------------------------	---------	---------	--------------------	--



