

BI B B

R A 1

D

BI T 6 -E -

0

$(T_j \leq 25^\circ\text{C}; I_D = 10\text{A}; V_{GS} = 10\text{V})$	V_p	4	V
----------------------------------------------------------------------	-------	---	---

Table 1: Electrical Characteristics (Typical Values)

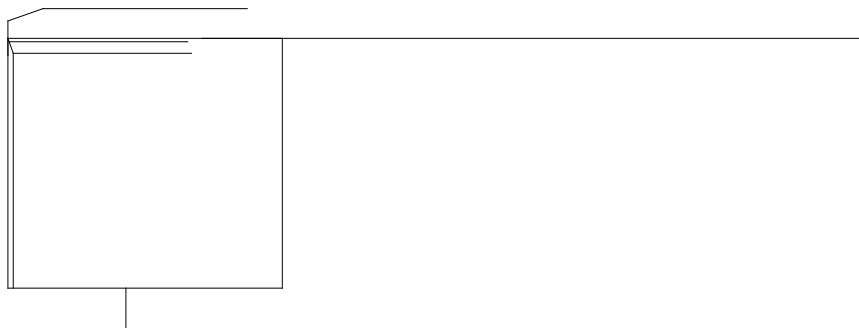
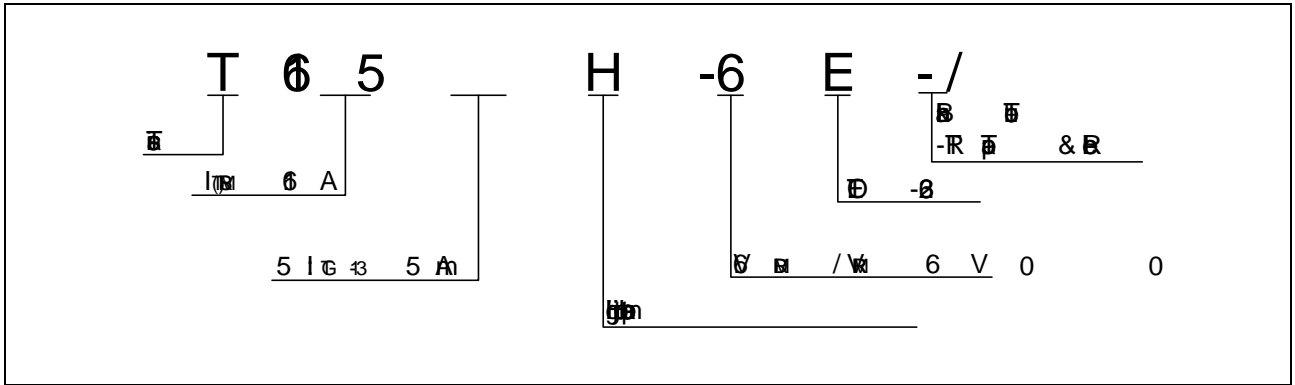
Symbol	Parameter	Conditions	Typical Value	Unit		
I_G	$V_{DS} = 10\text{V}, I_D = 10\text{A}$	-	5	A		
V_G		-	1	V		
V_G	$V_{DS} = 10\text{V}, T_j = 25^\circ\text{C}, R_{L} = 1\text{k}\Omega$	-	1	V ⁰		
I_L	$I_G = 12\text{A}$	-	8	A		
		-	1			
I_H	$I_T = 5\text{A}$	-	6	0	A	
dV/dt	$V_{DS} = 10\text{V}, V_{GS} = 10\text{V}, n = 1, T_j = 25^\circ\text{C}$	-	2	0	0	V/ μs
$(dV/dt)_c$	$(dV/dt)_c = 20\text{V}/\mu\text{s}, T_j = 25^\circ\text{C}$	-	2	0	0	A/m
t_o	$I_G = 12\text{A}, I_A = 10\text{A}, I_R = 10\text{A}, T_j = 25^\circ\text{C}$	-	2	0	μs^0	
t_b		-	8			

Table 2: Thermal Characteristics

Symbol	Parameter	Conditions	Typical Value	Unit
V_M	$I_M = 2\text{A}, \rho = 8\text{m}\Omega/\mu\text{s}$	$T_j = 25^\circ\text{C}$	1.4	V
V_D	$I_D = 10\text{A}$	$T_j = 25^\circ\text{C}$	-	V
R_D	$I_D = 10\text{A}$	$T_j = 25^\circ\text{C}$	2	m
I_{DM}	$V_{DS} = 10\text{V}, V_{GS} = 10\text{V}$	$T_j = 25^\circ\text{C}$	5	μA
I_{RM}		$T_j = 25^\circ\text{C}$	15	A

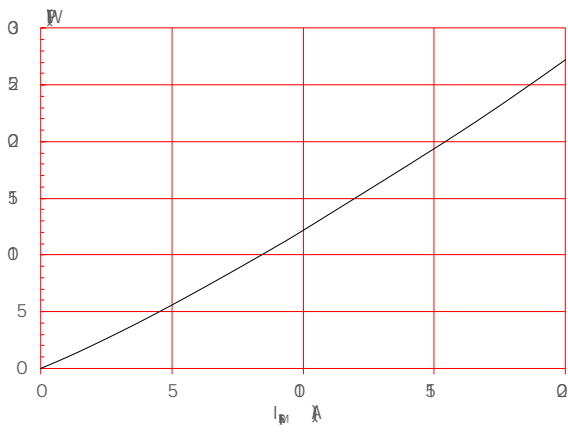
Table 3: Thermal Resistance

Symbol	Parameter	Typical Value	Unit
$R_{th(j-c)}$ <td>m^2/K</td> <td>12</td> <td>/W</td>	m^2/K	12	/W
$R_{th(j-a)}$ <td>m^2/K</td> <td>8</td> <td>/W</td>	m^2/K	8	/W



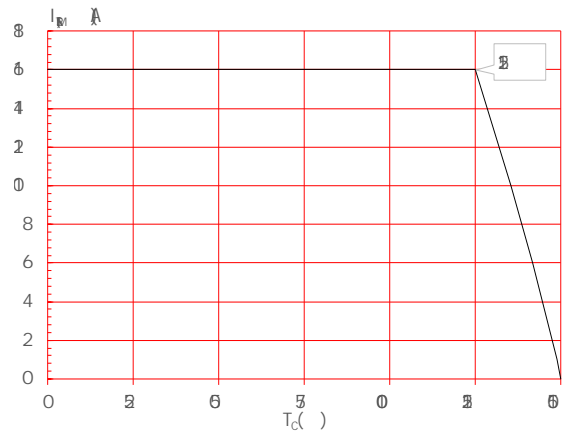
6 : Mb

6



6 Mb - Mb

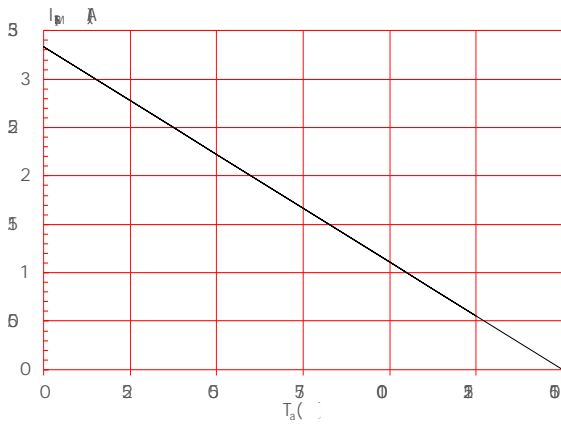
6



6 Mb - Mb

6

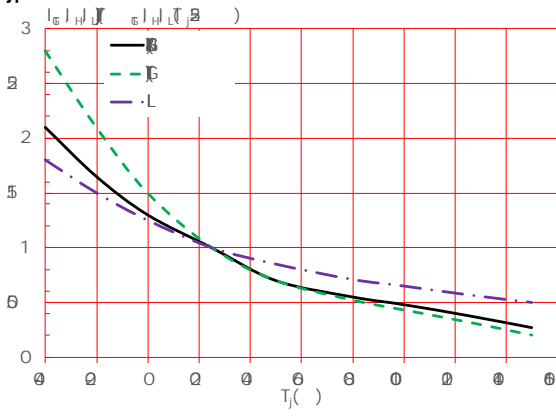
thickness:35μm)(full cycle)

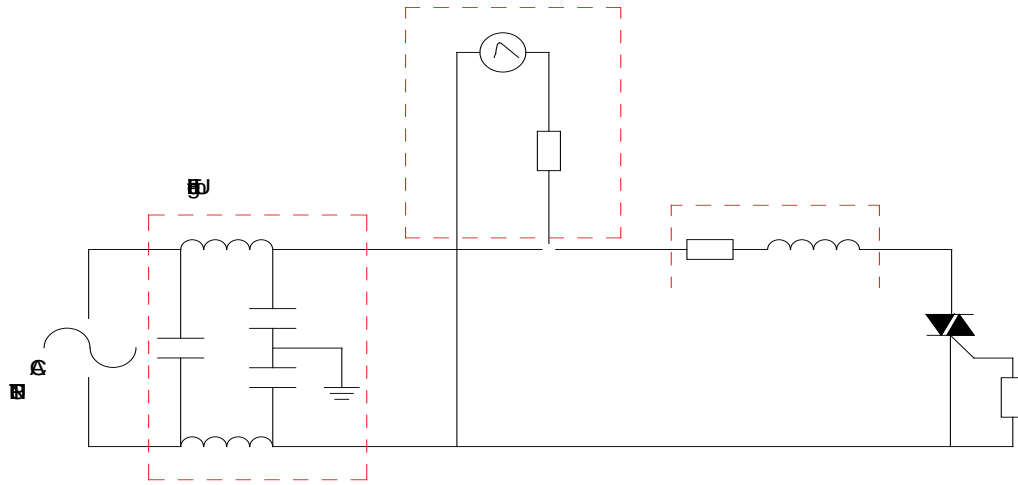


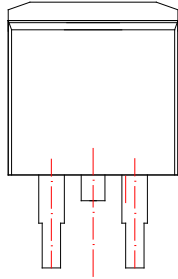
6 Mb - Mb

6

6 6
6
6







R	D							
	M			b				
	M	p	M	M	p	M		
A	9		1				0	
B	7		8				0	0
C	94		96				0	0
D	24						0	
E	12		15				0	0
F								

