



T2535H-6C 25A TRIAC

Rev.A.1.1

DESCRIPTION:

The T2535H-6C triac is suitable for general purpose AC switching. It can be used as an ON/OFF function in applications such as heating regulation, induction motor starting circuits, for phase control operation in light dimmers, motor speed controllers. Compared to traditional triacs, T2535H-6C provides

Peak pulse voltage ($T_j=25$; non-repetitive, off-state; FIG.7)	V_{pp}	1.5	kV	
(5)]	T	J	E	T

FIG.1: Maximum power dissipation versus RMS on-state current

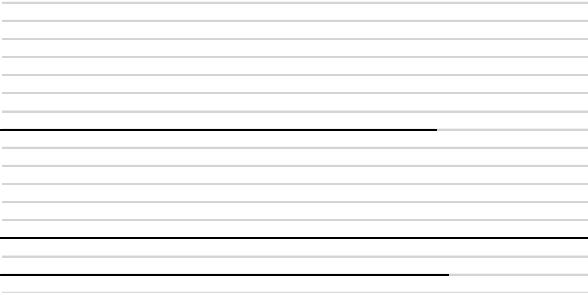
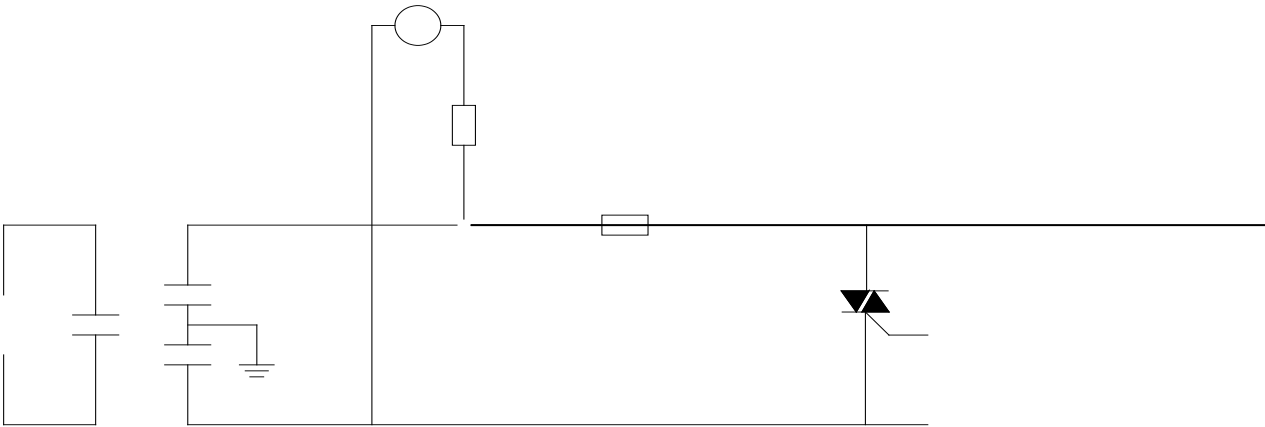


FIG.2: RMS on-state current versus case temperature

FIG.7 Test circuit for inductive and resistive loads to IEC-61000-4-5 standards



ORDERING INFORMATION

Order code	Voltage V_{DRM}/V_{RRM} (V)	IGT(mA) - Dy1.	Package	Base qty. (pcs)	Delivery mode
------------	----------------------------------	-------------------	---------	--------------------	------------------

T2535H-6C

