



JST04K-1000SW 4A TRIAC

Rev. A.1.1

DESCRIPTION:

The JST04K-1000SW triac is suitable for general purpose AC switching. It can be used as an ON/OFF function in applications such as heating regulation, induction motor starting circuits, for phase control operation in light dimmers, motor speed controller.

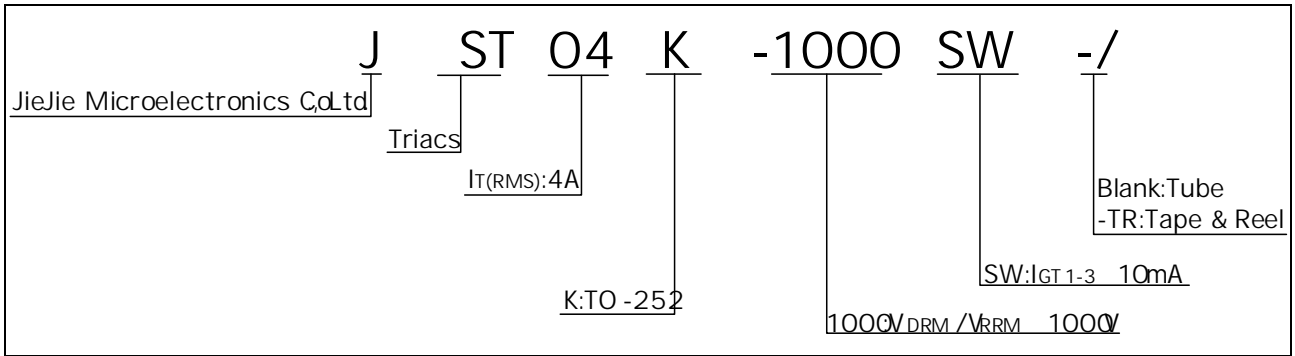
JST04K-1000SW
snubberless
006 (e (ra)-)6 (o-2e)10 (ed iso-2e)1e0.002 Tw 1.24 O Td [(t)23(O(ar)7 (t14

Peak pulse voltage ($T_j=25^\circ\text{C}$; non-repetitive, off-state; FIG.8)	V_{pp}	3	kV
--	----------	---	----

ELECTRICAL CHARACTERISTICS (unless otherwise specified)

Symbol	Test Condition	Quadrant	Value	Unit
--------	----------------	----------	-------	------

ORDERING INFORMATION



MARKING

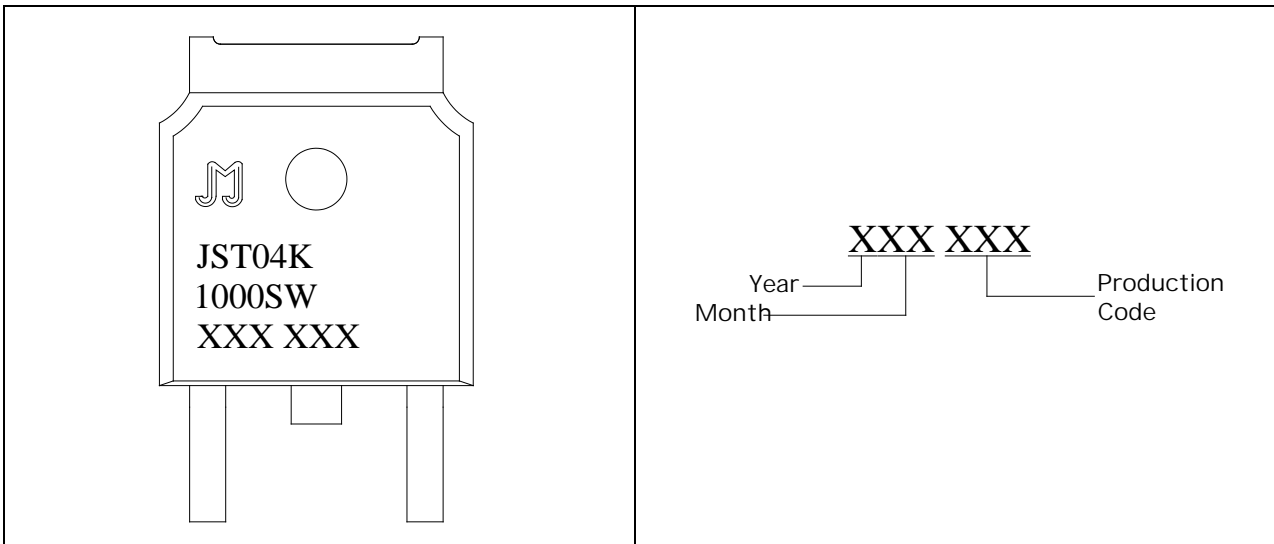


FIG.7: Relative variations of gate trigger current, holding current and latching current versus junction temperature

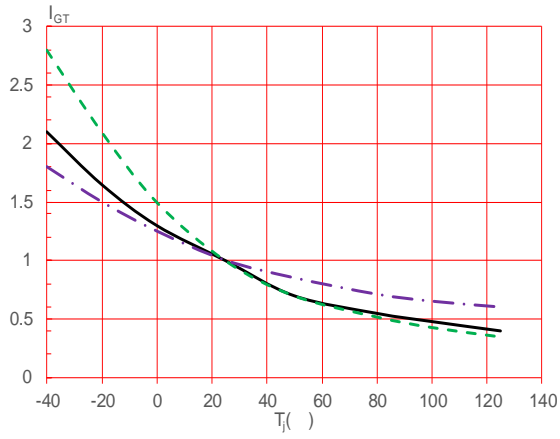
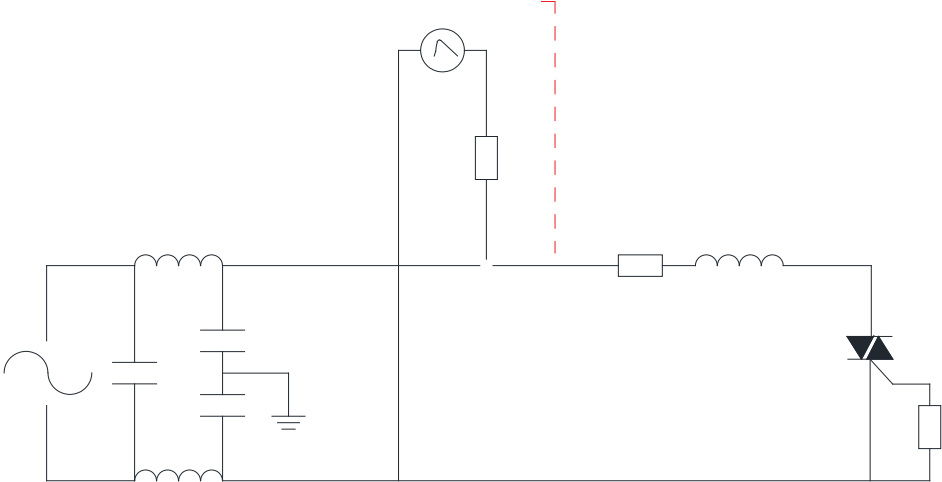


FIG.8 Test circuit for inductive and resistive loads to 100-5 standards



ORDERING INFORMATION

Order code	Voltage V_{DRM}/V_{RRM} (V)	IGT (mA)	Package	Base qty. (pcs)	Delivery mode
		- -			
JST04K-1000SW	1000	10	TO-252	80	Tube
JST04K-1000SWTR				2,500	Tape & Reel

JST04K-1000SW

 Jie Jie Microelectronics Co., Ltd.

DELIV EE42 Tc17 (.c)-1.3.7cLIV 0 Td ()Tj 0.6>Tj9007 Tc 0.007/MCID84./InlineSha>>B

