





ORDERING INFORMATION

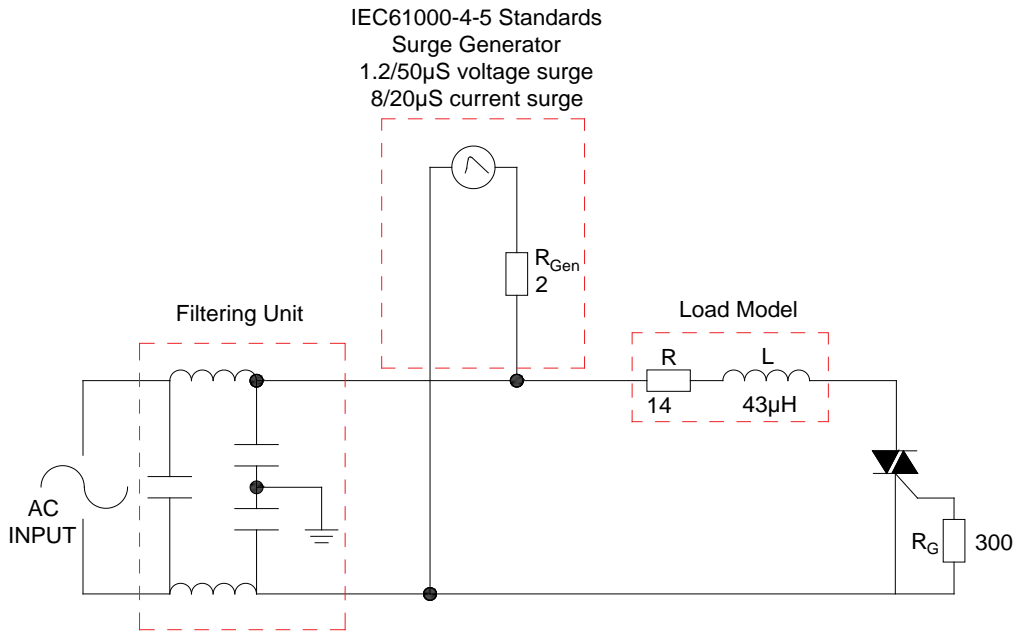
<u>J</u>	<u>ST</u>	<u>04</u>	<u>W</u>	<u>-600</u>	<u>BW</u>
JieJie Microelectronics Co., Ltd.	Triacs	$I_T(RMS):1A$			
		<u>W:SOT-223-2L</u>			<u>BW:IGT1-3 50mA</u>
				<u>600:VDRM /VRRM 600V</u>	

**JST04W-600BW**

**JST04W-600BW**

**JieJie Microelectronics Co., Ltd.**

FIG.8 Test circuit for inductive and resistive loads to IEC-61000-4-5 standards



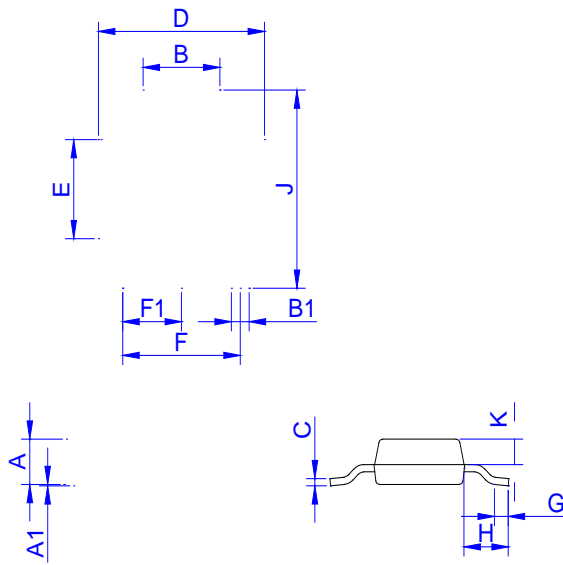
**ORDERING INFORMATION**

Order code	Voltage $V_{DRM}/V_{RRM}$ (V)	IGT(mA)	Package	Base qty. (pcs)	Delivery mode
		- -			
<b>JST04W-600BW</b>	<b>600</b>	<b>50</b>	<b>SOT-223-2L</b>	<b>4,000</b>	<b>Tape &amp; Reel</b>

**Document Revision History**

Date	Revision	Changes
Apr.11, 2023	A.1.0	Last updated
Oct.24, 2025	A.1.1	Revise PACKAGE MECHANICAL DATA

PACKAGE MECHANICAL DATA



DELIVERY MODE O

Ref.	Dimensions					
	Millimeters			Inches		
	Min.	Typ.	Max.	Min.	Typ.	Max.
W	-		12.30	-		0.482
E	1.65	1.75	1.85	0.065	0.069	0.073
F	5.45	5.50	5.55	0.215	0.217	0.219
D0		1.55	1.60		0.061	0.063
D1		-	-			
P0	3.90	4.00	4.10	0.154	0.157	0.161
P1	7.90	8.00	8.10	0.311	0.315	0.319
P2	1.95	2.00	2.05	0.077	0.079	0.081
10P0	39.80	40.00	40.20	1.567	1.575	1.583
A0	6.85	6.95	7.05	0.269	0.273	0.276
B0	7.15	7.25	7.35	0.280	0.284	0.288
K0	1.95	2.05	2.15	0.076	0.080	0.084
T	0.20	0.25	0.30	0.008	0.010	0.012

**JST04W-600BW**

**JieJieie**