



JST06C-800B 6A TRIAC

Rev.A.1.1

DESCRIPTION:

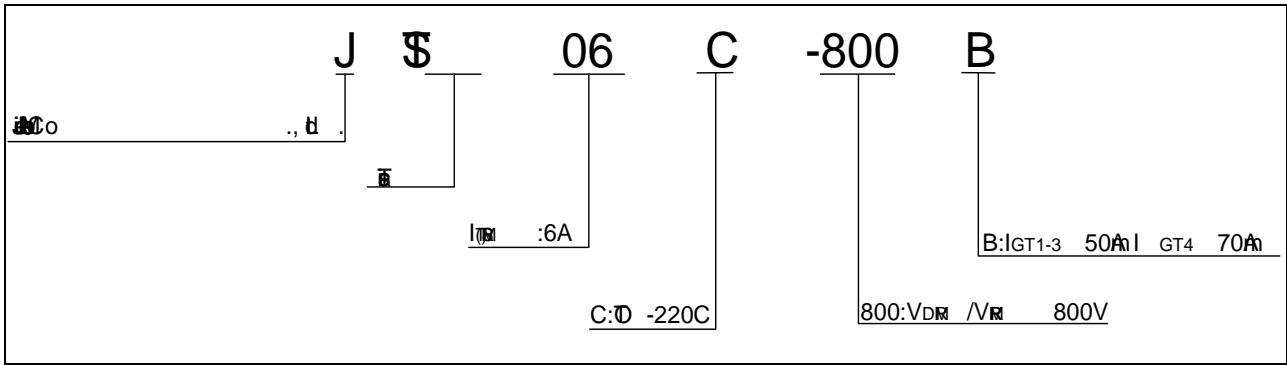
6 06C -800L - -65 2 2 T018B -

 ( $T_j=25$ ; $\rho$ - $\rho$ - FIG.7)	$V_p$	4	$\mu$
--	-------	---	-------

ELECTRICAL CHARACTERISTICS ( $T_j=25$  )

Symbol	Test Condition	Quadrant	Value	Unit
$I_{GT}$	$V_D=12V$ $L=33$	- -	MAX . 50	$A$
			70	
$V_{GT}$		AL	MAX . 1	V
$V_{GD}$	$V_D=V_{DM}$ $T_j=125$ $R_L=3.3k$	AL	MIN . 0.2	V
$I_L$	$I_G=1.2I_{GT}$	- -	MAX . 70	$A$
			80	
$I_H$	$I_T=200A$		MAX . 60	$A$
<del><math>t_{di}</math></del>	<del><math>V_D=540V</math> <math>G_{GD}</math> <math>r_T</math> <math>T_j=125</math></del>		<del>MIN . 500</del>	<del><math>V/\mu s</math></del>
<del><math>t_{dv}</math></del>	<del><math>(dI/dt) = 2.7A/\mu s</math> <math>T_j=125</math></del>		<del>MIN . 10</del>	<del><math>V/\mu s</math></del>
$t_o$	$I_G=80A$ $I_A=400A$ $I_R=40A$ $T_j=25$		TRF	

ORDERING INFORMATION



MARKING



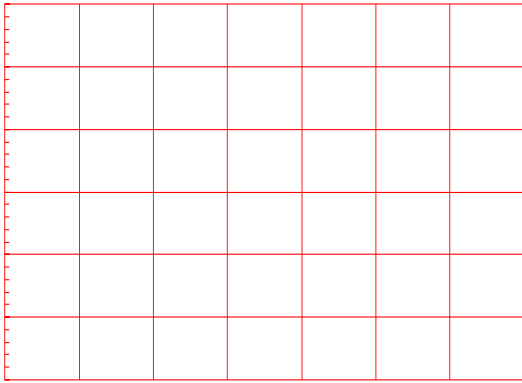
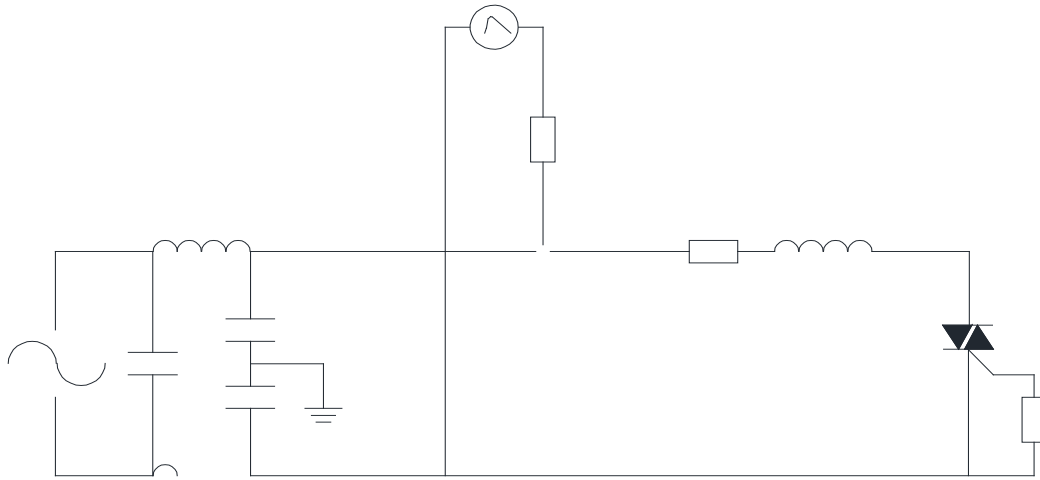
FIG.1:   
a 

FIG.2:  -   
b 





**ORDERING INFORMATION**

Order code	Voltage $V_{DRM}/V_{RRM}$ (V)	IGT(mA)		Package	Base qty. (pcs)	Delivery mode
		H- I- J	K			
<b>JST06C-800B</b>	<b>800</b>	<b>50</b>	<b>70</b>	<b>TO-220C</b>	<b>50</b>	<b>Tube</b>

**Document Revision History**

Da	R	Cg
----	---	----



