



JST06K-800SW 6A TRIAC

Rev.A.1.1

DESCRIPTION:

The JST06K-800SW triac is suitable for general purpose AC switching. It can be used as an ON/OFF function in

applications such as heating be Td [13.6 (4(Ah [13.6u(i)6 4 (s)4 (uc) (O)2 , us)1w 23.0d[13.6u[13

Peak pulse voltage ($T_j=25$; non-repetitive, off-state; FIG.8)	V_{pp}	3	kV
--	----------	---	----

ELECTRICAL CHARACTERISTICS ($T_j=25$ unless otherwise specified)

Symbol	Test Condition	Quadrant	3Qh3 Tw 123.48 0.481 31.3(u 316.2 re W <
--------	----------------	----------	--

ORDERING INFORMATION

J ST 06 K -800 SW

FIG.1: Maximum power dissipation versus RMS on-state current



FIG.2: RMS on-state current versus case temperature

FIG.7: Relative variations of gate trigger current, holding current and latching current versus junction temperature

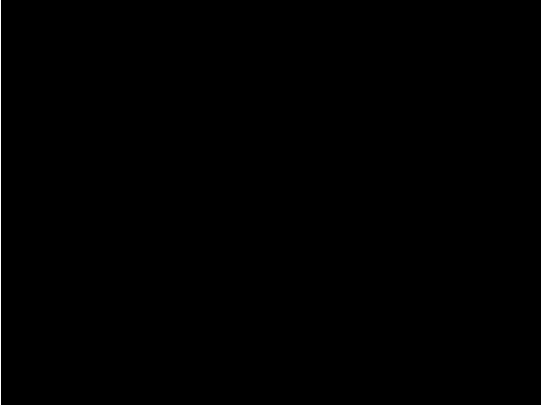
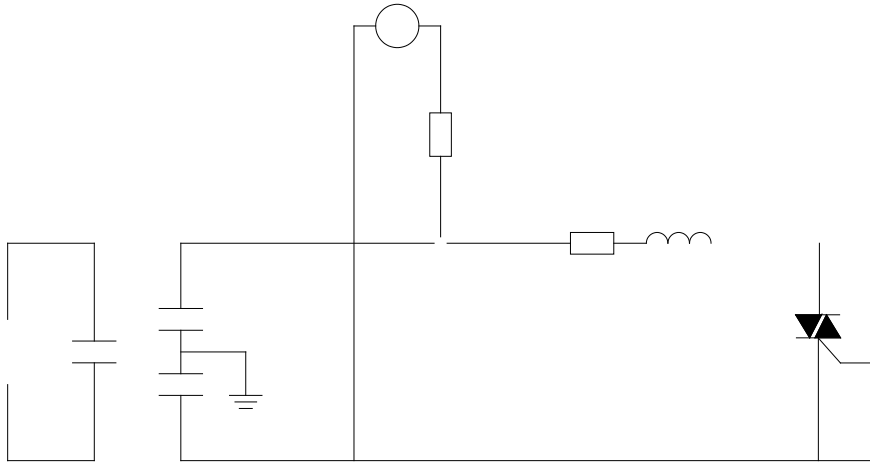


FIG.8 Test circuit for inductive and resistive loads to IEC-61000-4-5 standards



ORDERING INFORMATION

Order code	Voltage V_{DRM}/V_{RRM} (V)	IGT(mA)	Package	Base qty. (pcs)	Delivery mode
		- -			
JST06K-800SW	800	10	TO-252	80	Tube
JST06K-800SW-TR				2,500	Tape & Reel

Document Revision History

