

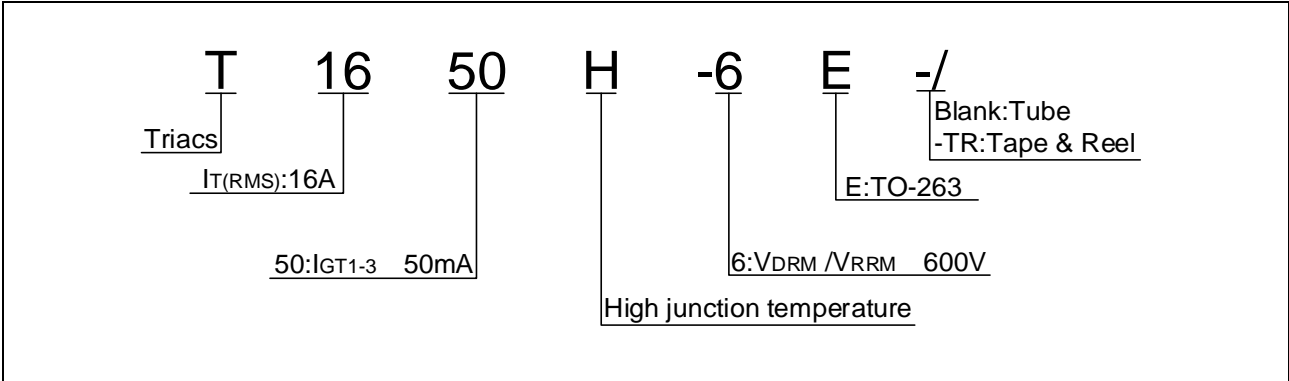


Peak pulse voltage ( $T_j=25$ ; non-repetitive, off-state; FIG.8)	$V_{pp}$	4	kV
--	----------	---	----

**ELECTRICAL CHARACTERISTICS** ( $T_j=25$  unless otherwise specified)

**Symbol      Test Condition      Quadrant**

ORDERING INFORMATION



MARKING



FIG.1 Maximum power dissipation versus RMS on-state current

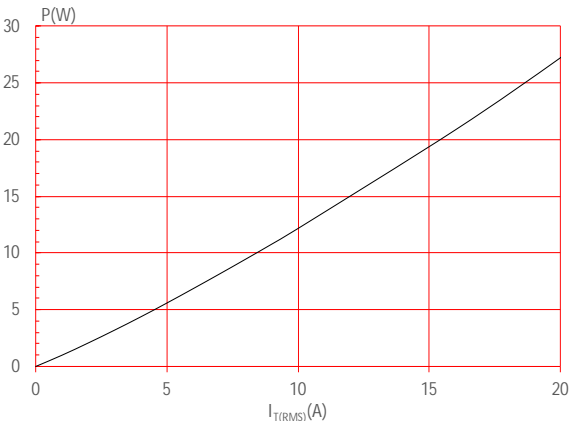


FIG.2: RMS on-state current versus case temperature

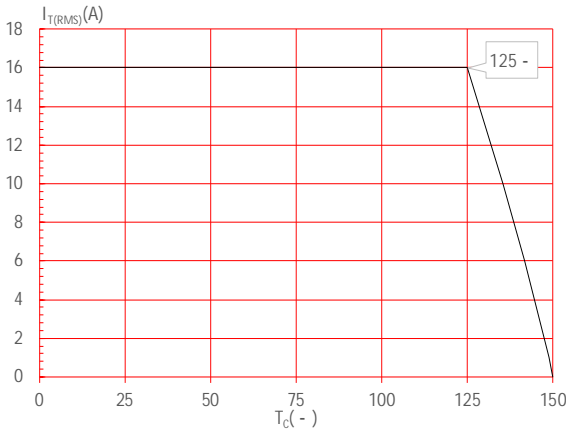
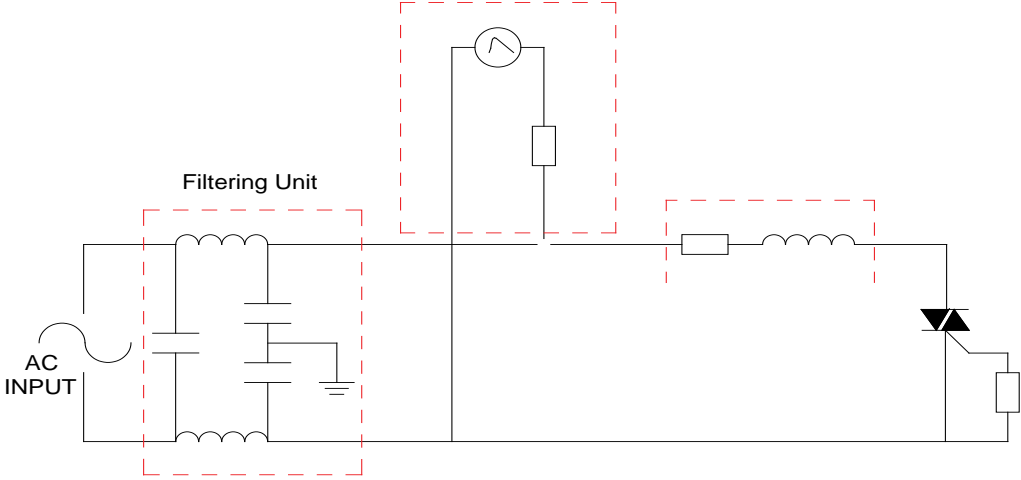


FIG.7:

FIG.8 Test circuit for inductive and resistive loads to IEC-61000-4-5 standards

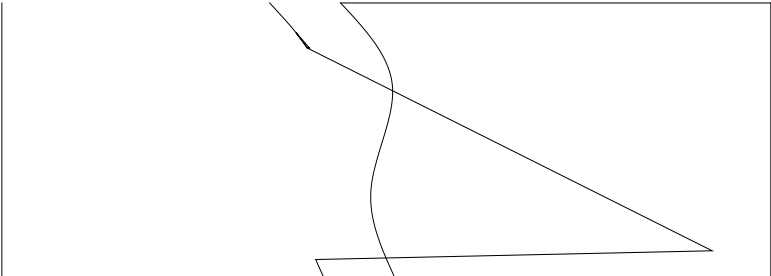
IEC61000-4-5 Standards  
Surge Generator







DELIVERY MODE



Information furnished in this document is believed to be accurate and reliable. However,